

**Howard L. Bost Memorial
Health Policy Forum
Kentucky Vaccine Policy
Myths, Messengers and Messages**

A Pediatrician Experience

Maria Fernanda Nota, MD

Metro Louisville Board of Health

Co-Chair Immunization Advocacy Committee

Pediatrician & Community Medical Director for Norton Children's Medical Group

KYIR - Benefits

- ▶ The Kentucky Immunization Registry (KYIR) houses immunization data on Kentucky residents of all ages
- ▶ KYIR receives immunization data from hospitals, pharmacies, health departments, and clinics across the state
- ▶ It is easily accessible through a website interface
- ▶ If the electronic health system is connected to the Kentucky Health Information Exchange (KHIE), KYIR can receive immunization data directly from the facility without the need of manual vaccination entry

KYIR - Benefits

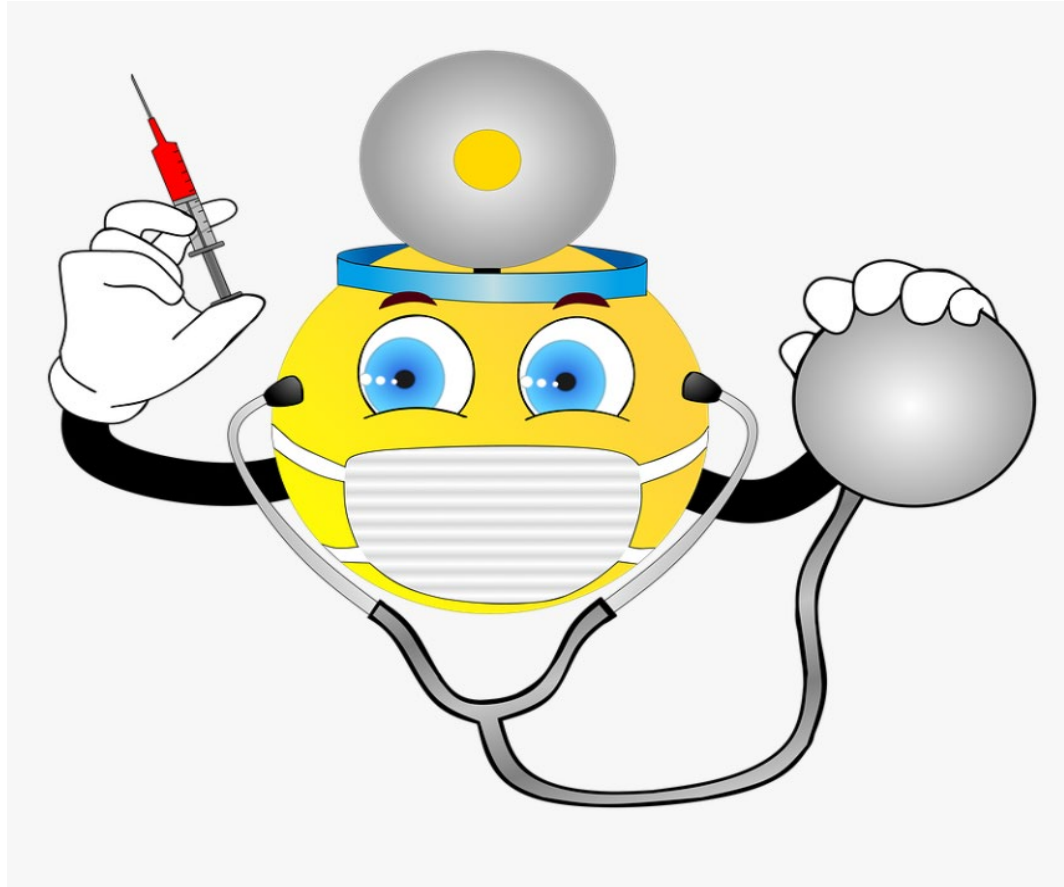
- ▶ Free access to a statewide immunization information system
- ▶ Researching state immunization status, including COVID-19 vaccine
- ▶ Running a Reminder/Recall report to quickly review patients coming due or past due for all recommended immunizations
- ▶ Utilizing the KYIR coverage rate report to ensure meaningful coverage and maximum protection of patients

KYIR - Provider Administering Immunizations

Minimum information required to meet KYIR mandatory reporting for adult and pediatric vaccinations

- ▶ Date of administration
- ▶ Vaccine name
- ▶ Vaccine manufacturer
- ▶ Lot number
- ▶ Name and title of person administering
- ▶ Name and location (address) of where permanent record resides
- ▶ Vaccine Information Statement (VIS)

KYIR - Challenges



Case 1

A pediatric patient whose family moved from Chicago is in clinic to establish care. The mother brings an Illinois Immunization certificate. She reports that her child is up to date with the shots. She just needs a KY Immunization Certificate for her child to start school.

- ▶ Who will review the Illinois certificate?
- ▶ Who will enter Illinois vaccination data into the KYIR?
- ▶ Would it be possible to give a KY Immunization Certificate today?

Case 2

A child comes to the office with the foster parent. The foster parent has had this child only for 1 week and has no medical or vaccines records. An immunization record is needed for the child to start daycare. You or your assistant log in in the KYIR hoping that the information will be there...

- ▶ Surprise! Nothing is there...
- ▶ What we do next?
- ▶ Do we start the vaccine series over?

Case 3

A child, whose family just moved from Mexico 6 months ago, is in your office because the child needs a school physical and immunization certificate to attend 6th grade. The parent brings a vaccine record that looks like this:

ESQUEMA DE VACUNACIÓN				
VACUNA	ENFERMEDAD QUE PREVIENE	DOSES	EDAD Y FRECUENCIA	FECHA DE VACUNACIÓN
BCG	TUBERCULOSIS	HOSPITAL DE LA MUJER	1 MES	04 SEP 2019
HEPATITIS B	HEPATITIS B	PRIMERA	Dr. Manuel Domínguez Alvarado Vacunación Universal	03 SEP 2019
		SEGUNDA	CLÍNICA PERALVELLO MEDICINA PREVENTIVA	05 NOV 2019
		TERCERA	4 MESES	13 MAR 2020
TETANUS, DIFTERIA, TOS FERINA, POLIOMIELITIS E INFECCIONES POR H. Influenzae B	DIFTERIA, TOS FERINA, TETANOS, POLIOMIELITIS E INFECCIONES POR H. Influenzae B	PRIMERA	CLÍNICA PERALVELLO MEDICINA PREVENTIVA	05 NOV 2019
		SEGUNDA	5 MESES	18 ENE 2020
		TERCERA	6 MESES	13 MAR 2020
		CUARTA	18 MESES	07
DPT	DIFTERIA, TOS FERINA Y TETANOS	REFUERZO	4 AÑOS	
ROTAVIRUS	ROTAVIRUS	PRIMERA	CLÍNICA PERALVELLO MEDICINA PREVENTIVA	05 NOV 2019
		SEGUNDA	15 MESES	18 ENE 2020
		TERCERA	6 MESES	13 MAR 2020

ESQUEMA DE VACUNACIÓN				
VACUNA	ENFERMEDAD QUE PREVIENE	DOSES	EDAD Y FRECUENCIA	FECHA DE VACUNACIÓN
NEURÓLOGICA CONJUGADA	NEURÓLOGICA CONJUGADA	PRIMERA	12 MESES	05 NOV 2019
		SEGUNDA	4 MESES	18 ENE 2020
		REFUERZO	12 MESES	
	INFLUENZA	PRIMERA	4 MESES	7 MAR
		SEGUNDA	7 MESES	13 MAR 2020
		REVACUNACIÓN	ANUAL HASTA LOS 59 MESES	
SRP	SARAMPION, RUBÉOLA Y PAROTIDITIS	PRIMERA	1 AÑO	
		REFUERZO	6 AÑOS	
	POLIOMIELITIS	ADICIONALES		
SR	SARAMPION Y RUBÉOLA	ADICIONALES		
OTRAS VACUNAS				

Case 3

- ▶ What do you do next?
- ▶ Who reviews the foreign immunization certificate and translates it to English?
- ▶ Are these vaccines in accordance with recommended vaccination in US? Are intervals correct?
- ▶ Who will enter the historic data into the KYIR?

Recommendations

- ▶ Create a taskforce that includes pharmacists, pediatricians, adult vaccine providers, school nurses, KHIE and potentially others to review and examine the necessary administrative regulation changes needed
- ▶ Identify practices/pharmacies within the state that are not using the KYIR. Assess barriers and provide a solution tailored to the specific need
- ▶ Reduce the burden of manual data entry via technological improvements to KYIR
- ▶ Allocate funding: Grants to providers to cover costs to implement and maintain the KYIR



THANK YOU!
¡GRACIAS!