

Public Health Transformation From Planning to Implementation

Jan Chamness, MPH, Director
Division of Women's Health
PHT Project Lead

Foundation for a Healthy Kentucky's *Health for a Change*

August 19, 2021



Kentucky Public Health
Prevent. Promote. Protect.

Objectives

Provide a brief re-cap of the purpose of Public Health Transformation and the one-year planning process;

Describe the Public Health Transformation implementation plan and timeframes;

Provide key goals and objectives within Public Health Transformation;

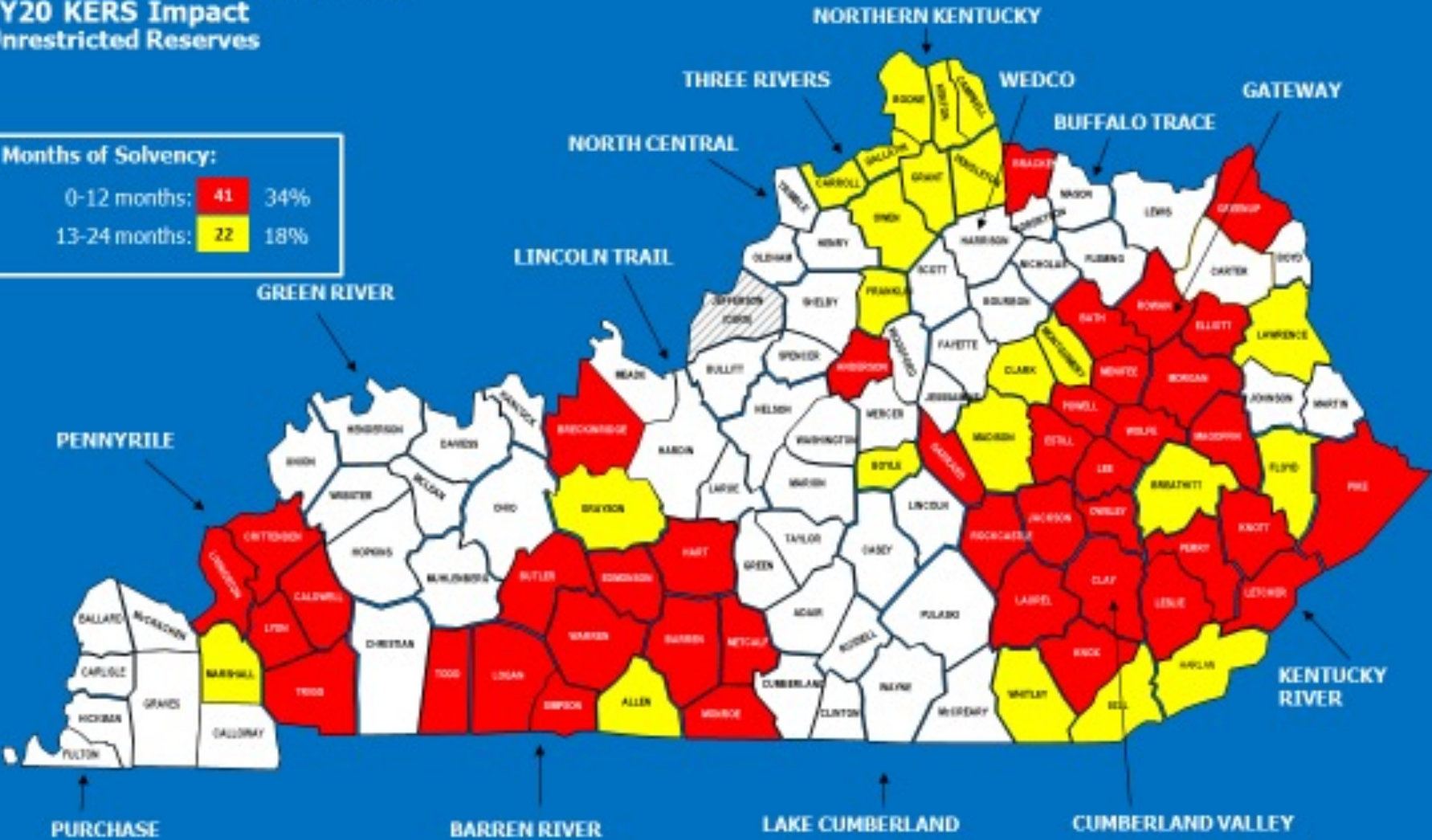
Describe the importance of creating a “culture of Public Health Transformation” within Kentucky’s public health system.



Local Health Departments Financial Crisis

LOCAL HEALTH DEPARTMENTS
FY20 KERS Impact
Unrestricted Reserves

Months of Solvency:		
0-12 months:	41	34%
13-24 months:	22	18%



Public Health Modernization



Public Health 3.0

Kentucky's Health Outcomes



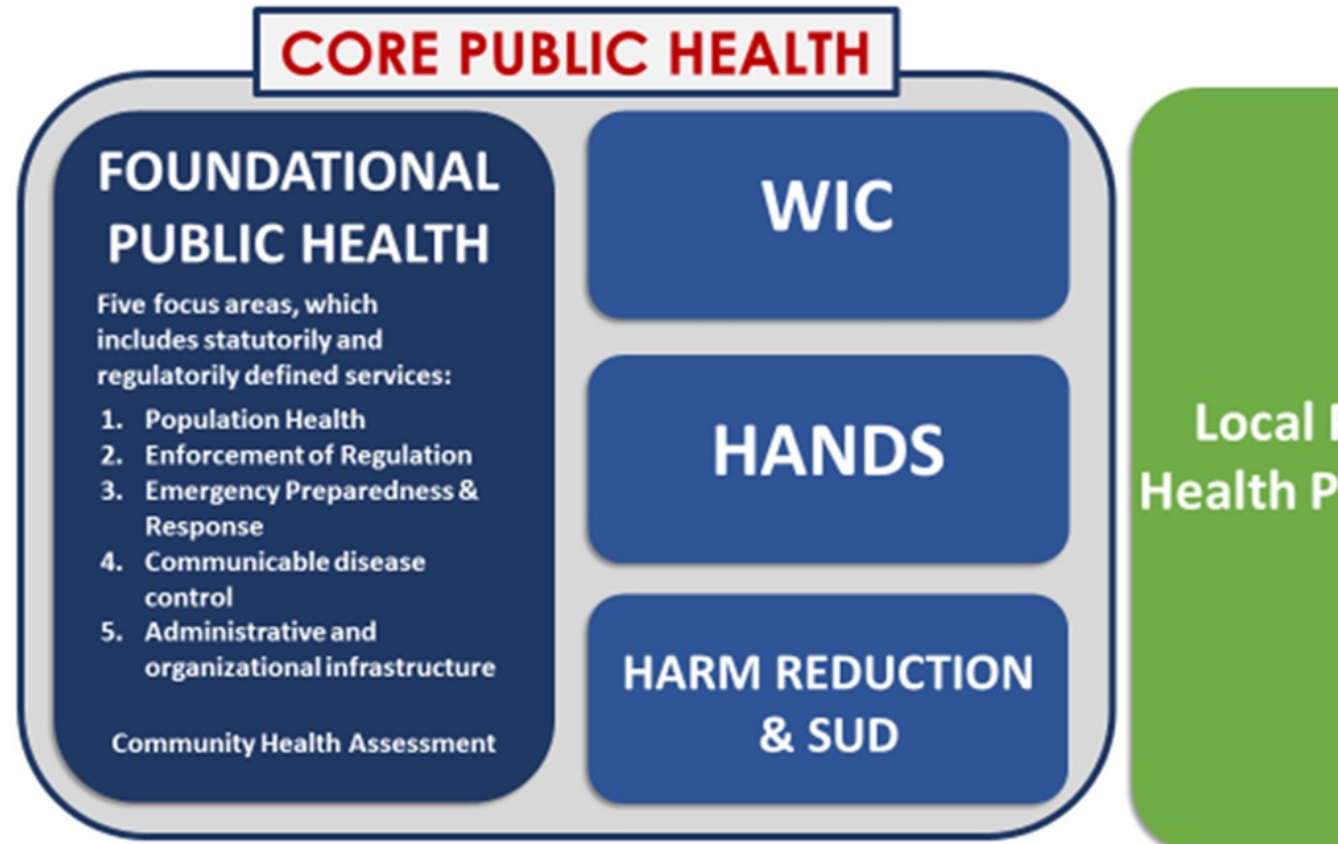
2020 Annual Report
Kentucky

Health Behaviors: 48th
Health Outcomes: 46th

House Bill 129

11.185

core public health programs
foundational public health programs
local public health priorities



*SIMPLIFY * FOCUS * PRIORITIZE*

Local Public Health Priorities

Accreditation

Arthritis

Cancer screening

Diabetes

Home health

Pediatric/Adolescent health

Nutrition

Radon

Stay Well biometric screenings

Adult services

Asthma

Dental/dental hygiene

Family planning

Maternity services

Physical activities

Radiation & product safety

School health

Tobacco

*SIMPLIFY * FOCUS * PRIORITIZE*

Local Public
Health Priorities

House Bill 129

KRS 211.187

- Local public health priorities:
 - Data-driven need
 - Evidence-based, promising practices
 - Adequate funding
 - Performance and quality management plans
 - Exit strategy

**Local Public
Health Priorities**

*SIMPLIFY * FOCUS * PRIORITIZE*

What does PHT look like in practice?

er Screening (Colon and Breast & Cervical):

contracts with FQHCs, university based clinics;

us on outreach;

tucky Cancer Link – patient navigation.

escent health, Diabetes, Tobacco:

mpetitive grant applications based on community need.

atric:

iatric Assessment/Well child training – comprehensive assessment.

ly Planning:

contracts with FQHCs, university based clinics;

urance option;

us on outreach;

mprehensive Reproductive Exam Training (CRET) – comprehensive assessment.

ol Health:

ansion of FQHC school-based clinics.



Public Health Transformation (PHT) Timeline



Public Health Transformation Goals

Ensure equitable access to public health services across the Commonwealth;

Increase focus on population health;

Promote fiscal responsibility;

Strengthen collaboration/partnerships;

Optimize internal capacity.





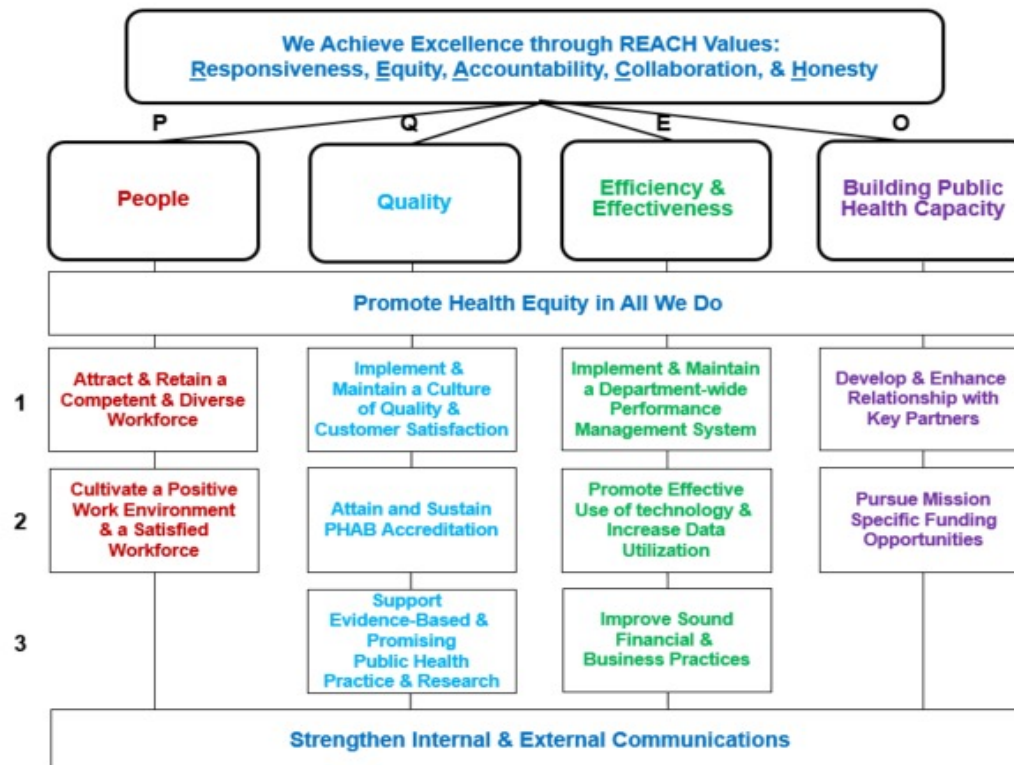
Kentucky Public Health

Prevent. Promote. Protect.

Strategic Map: 2012-2025

Mission: To improve the health and safety of people in Kentucky through **Prevention, Promotion and Protection**

Vision: Healthier People Healthier Communities.



12/9/11 Adopted
10/29/18 Revised
07/31/21 Revised

"STRATEGIC MINDSET"

The Way You Think

- *visionary*
- *long-term*
- *broad stroke*
- *dynamic view*

The Results You Get

- *mission focused*
- *intentional*
- *sustainable*
- *transformational*

The Actions You Take

- *interventions*
- *policy change*
- *infrastructure*
- *expanded network*



From Planning to Implementation

Process to culture;

Program(grant)driven platform to comprehensive/holistic approach

Direct patient care to population health;

Provider to partner;

Health equity lens;

Emphasis on communication – both internally and externally;

Public Health Transformation to performance management/quality improvement.



Progress To Date

- ▶ Planning Phase:
 - Finalizing work plans
 - Over 100 staff – both state and local involved
- ▶ Identified local public health priority programs
- ▶ Revised LHD budget review process FY 22
- ▶ Continue to define LHD budget review process FY23
- ▶ Updated KDPH Strategic Plan 2021 – 2025
- ▶ Ongoing PHT initiatives
- ▶ Enhanced communication tools
- ▶ Designated PHT team with a focus on performance management, accountability and transparency
- ▶ Federal COVID relief funding – workforce development, infrastructure, staffing, etc.
- ▶ Enhanced partnerships with clinical providers, e.g., Kentucky Primary Care Association and its members, university and hospital based primary care clinics
- ▶ “PHT movement” focusing on creating a culture of change

Thank you!

Jan Chamness, MPH, Director
Division for Women's Health

Public Health Transformation Project Lead

Jan.Chamness@ky.gov



Kentucky Public Health
Prevent. Promote. Protect.